



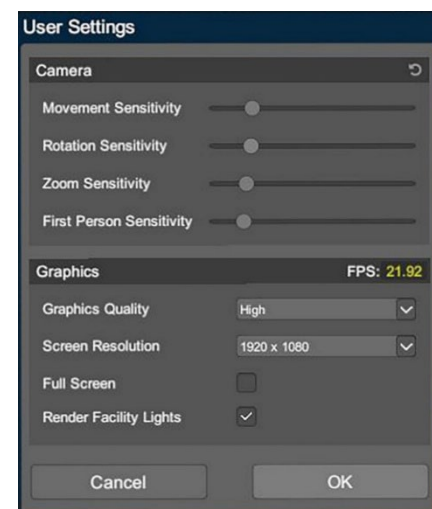
SCRIBE3D[®]

Hardware System Requirements



Performance Recommendations:

Use of recommended settings will result in full use of Scribe3D's visualization capabilities. User settings are available to enable performance on hardware lacking a dedicated graphics card. The user settings menu allows adjustment of graphics quality, lighting, resolution, and windowed versus full screen mode. For the minimum hardware defined below, it is recommended to use low quality, full screen, without rendering facility lights.



Hardware Specifications:

Recommended Requirements (High Graphics Quality)

Operating System: Windows 10 64-bit
 Processor: Quad Core @ 3.6GHz or greater
 Memory: 16GB+
 Hard Drive 25 GB+
 Video Card: Discrete Graphics Card - NVIDIA GeForce GTX1060, AMD Radeon RX 580 or better with at least 4GB VRAM

Minimum Requirements (Low Graphic Quality)

Operating System: Windows 7 64-bit
 Processor: Dual Core @ 2.0 GHZ or better
 Memory: 8GB+
 Hard Drive: 10GB+
 Video Card : CPU Integrated Graphics

Apply for free licensing, training, and online support at insetools.sandia.gov
 Contact modsimteam@sandia.gov with questions

